

# 929 PUMP SETTING GAUGE



MODEL 929-1-S

## MODEL 929-1-S

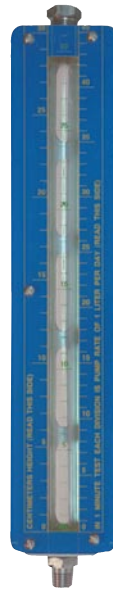
Gauge mounts in suction line between reservoir and chemical pump and allows you to accurately calibrate pump to the desired amount of chemical to be injected. It provides a visual indication of liquid in the reservoir as well as a rapid means for setting the chemical pump.

## MODEL 929-1-S-MRH

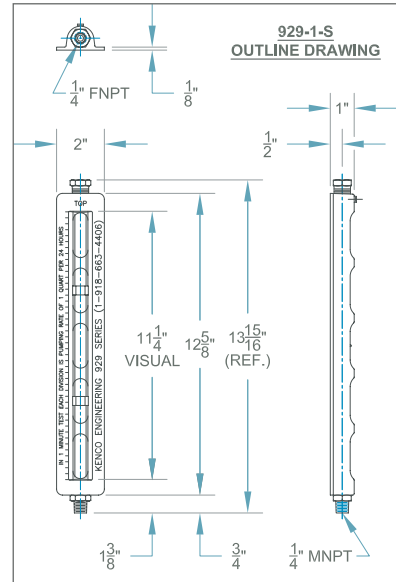
Same as 929-1-S except with a clear polycarbonate sight tube shield with silk screened Metric Rate and Height scales. Scales are in Centimeters, Milliliters and Liters Per Day based on a one minute test.

## MODEL 929-2

Same as 929-1-S except lower gauge connection is a 1/4" quick disconnect plug meeting industrial interchangeability requirements of MIL-C-4109. This allows gauge to be easily moved to various quick disconnect coupler locations.



MODEL 929-1-S-MRH



## MODEL SPECIFICATIONS

| MODEL NUMBER | BASIC MODEL DESCRIPTION | *MAXIMUM PUMP RATE | *RATE SCALE DIVISIONS | MOUNTING THREAD | VENT SIZE | WETTED METALS   | SIGHT TUBE | SEAL MATERIAL |
|--------------|-------------------------|--------------------|-----------------------|-----------------|-----------|-----------------|------------|---------------|
| 929-1-S      | GAUGE ONLY              | 11.25 GPD          | 1 QPD                 | 1/4" MNPT       | 1/4" FNPT | 303 S.S.        | GLASS      | AFLAS         |
| 929-1-S-MRH  |                         | 42 LPD             | 1 LPD / 1 ML          |                 |           |                 |            |               |
| 929-1-S6     | GAUGE ONLY              | 11.25 GPD          | 1 QPD                 | 1/4" MNPT       | 1/4" FNPT | 316 S.S.        | GLASS      | AFLAS         |
| 929-1-S6-MRH |                         | 42 LPD             | 1 LPD / 1 ML          |                 |           |                 |            |               |
| 929-2        | 929-1-S w/COUPLER PLUG  | 11.25 GPD          | 1 QPD                 | 1/4" CPLR. PLUG | 1/4" FNPT | C.S. / 303 S.S. | GLASS      | AFLAS         |
| 929-2-MRH    |                         | 42 LPD             | 1 LPD / 1 ML          |                 |           |                 |            |               |
| 1061         | QUICK COUPLER f/929-2   | N/A                | N/A                   | 1/4" MNPT       | N/A       | C.S.            | N/A        | BUNA          |
| 2037         | 929-2 COUPLER PLUG      |                    |                       | 1/4" FNPT       |           |                 |            | N/A           |

\*Maximum Pump Rates are based on a one minute test. Rate Scale Divisions in Quarts Per Day / Liters Per Day are based on a one minute test and Scale Divisions in Milliliters are based on gauge volume.

## ORDERING SYSTEM

### 929 Pump Setting Gauges

REQUESTED BY: \_\_\_\_\_ COMPANY: \_\_\_\_\_

ADDRESS: \_\_\_\_\_ CITY: \_\_\_\_\_ STATE: \_\_\_\_\_ ZIP: \_\_\_\_\_

PHONE: \_\_\_\_\_ FAX: \_\_\_\_\_ EMAIL: \_\_\_\_\_

#### Model Number

929-1-S  
929-1-S-MRH  
929-1-S6  
929-1-S6-MRH

929-2  
929-2-MRH  
1061  
2037

#### O-ring Seal Material Options other than Aflas:

B = Buna-N  
E = Ethylene Propylene  
V = Fluorocarbon  
T = PTFE (Not available on Test Valve)

Represented by:

Kenco Sales Offices:

PO Box 470426  
Tulsa, OK 74147  
phone 918.663.4406  
fax 918.663.4480  
<http://www.kenco-eng.com>  
email: [info@kenco-eng.com](mailto:info@kenco-eng.com)

**Baton Rouge Office**  
11616 Industriplex, Suite 7  
Baton Rouge, LA 70809  
phone 225.755.1912  
fax 225.755.1913  
<http://www.kenco-eng.com>  
email: [kenco-la@kenco-eng.com](mailto:kenco-la@kenco-eng.com)

